



TAI-SAW TECHNOLOGY CO., LTD.

No. 3, Industrial 2nd Rd., Ping-Chen Industrial District,
Taoyuan, 324, Taiwan, R.O.C.

TEL: 886-3-4690038 FAX: 886-3-4697532

E-mail: tstsales@mail.taisaw.com Web: www.taisaw.com

Product Specifications Approval Sheet

Product Description: SAW Resonator 1090 MHz SMD 3.8X3.8 mm

TST Part No.: TD0116B

Customer Part No.: _____

Customer signature required
Company: _____
Division: _____
Approved by : _____
Date: _____

Checked by: _____ Jimmy Han *Jimmy Han*

Approved by: _____ Francis Chen *Francis Chen*

Date: _____ 2011/02/08

1. Customer signed back is required before TST can proceed with sample build and receive orders.
2. Orders received without customer signed back will be regarded as agreement on the specifications.
3. Any specifications changes must be approved upon by both parties and a new revision of specifications shall be released to reflect the changes.



TAI-SAW TECHNOLOGY CO., LTD.

No. 3, Industrial 2nd Rd., Ping-Chen Industrial District,
Taoyuan, 324, Taiwan, R.O.C.

TEL: 886-3-4690038 FAX: 886-3-4697532

E-mail: tstsales@mail.taisaw.com Web: www.taisaw.com

SAW Resonator 1090 MHz

MODEL NO.: TD0116B

REV. NO.: 2

A. FEATURES:

1. Two-Port Resonator.

B. MAXIMUM RATING:

1. Input Power Level: 3 dBm
2. DC voltage: 12 V
3. Operating Temperature: -40°C to +85°C
4. Storage Temperature: -40°C to +85°C

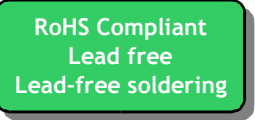
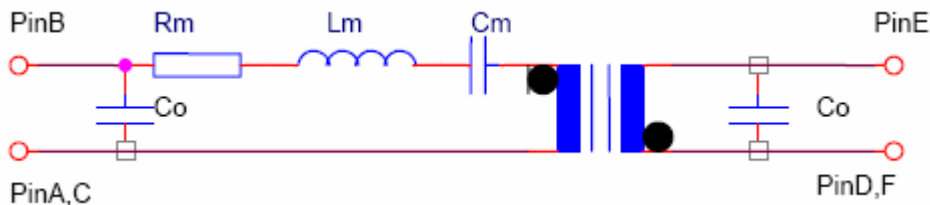
C. ELECTRICAL CHARACTERISTICS:

Reference Temperature $T_A=25^\circ\text{C}$

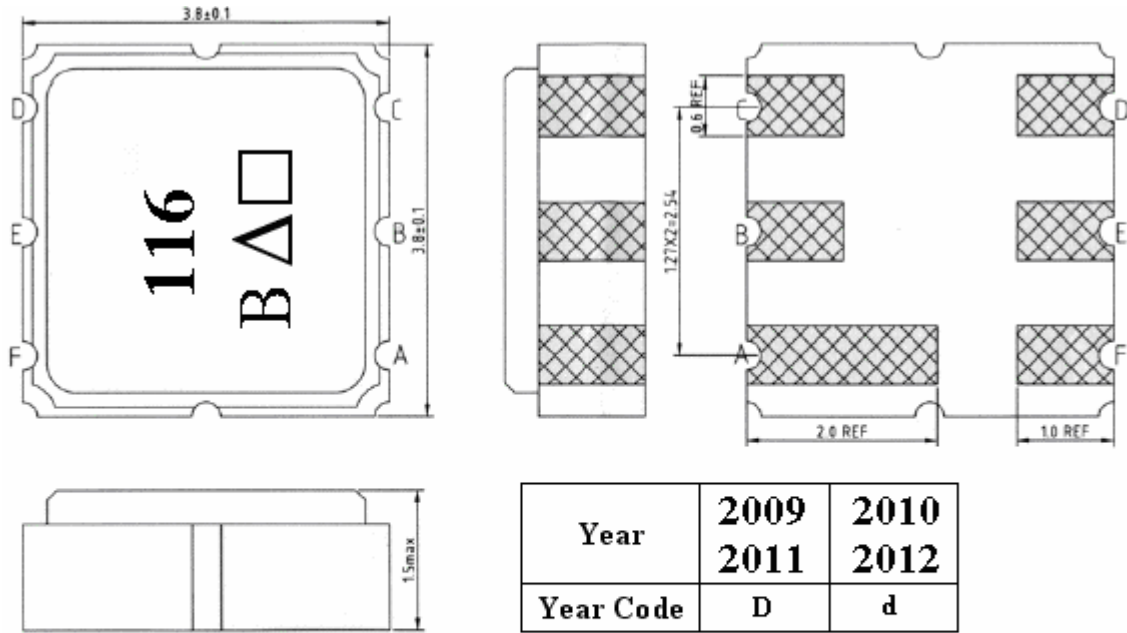
Characteristic	Units	Minimum	Typical	Maximum
Center frequency Fr	MHz	1089.900	1090	1090.160
Insertion Loss IL	dB	-	10	12
Unloaded Quality factor		-	4700	-
Ageing of Fc	ppm	-	-	10/year
Equivalent Elements				
Motional capacitance C1	fF	-	0.18	-
Motional inductance L1	μH	-	114	-
Motional resistance R1	Ohm	-	178	-
Parallel capacitance Co	pF	-	1.5	-
Temp. coeff.	ppm/c*2	-	0.032	-
Turnover To	deg.C	-	25	-
Package size		SMD 3.8X3.8X1.4mm		

D. EQUIVALENT CIRCUIT:

Two-Port Resonator:

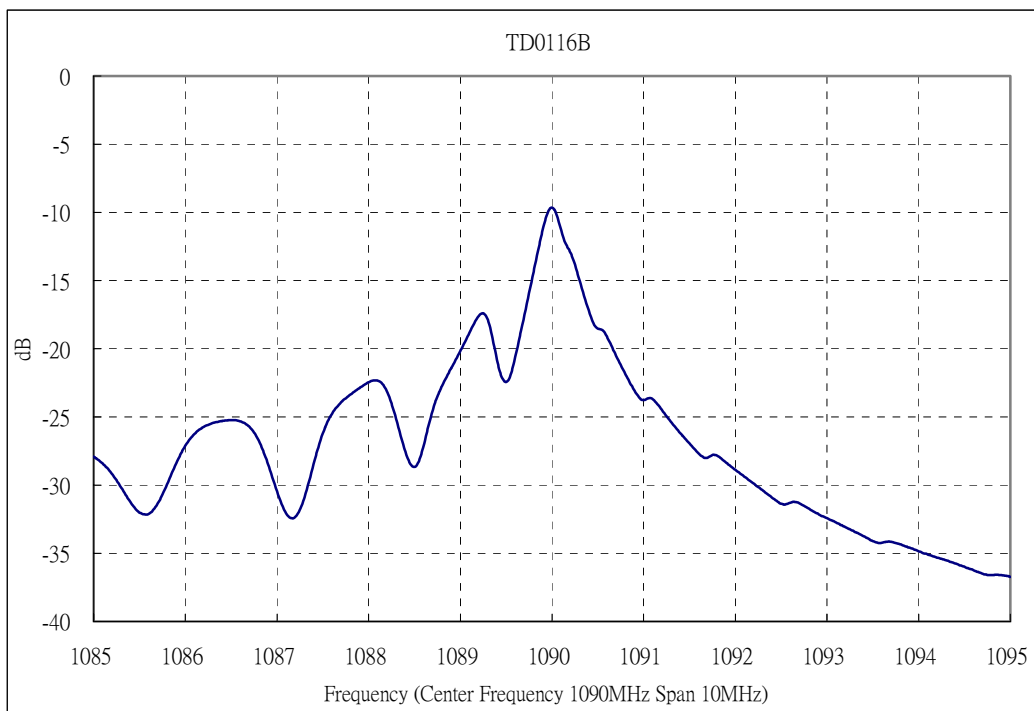


E. OUTLINE DRAWING:

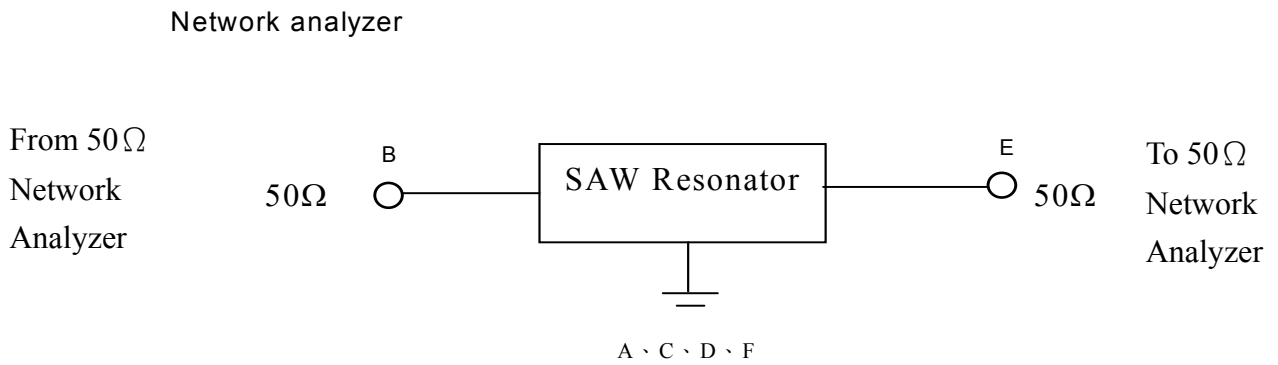


- #E : Input or Output
- #B : Output or Input
- #A、C、D、F : Ground
- Δ : Year Code
- : Data Code(Follow the table provided by planer each year)

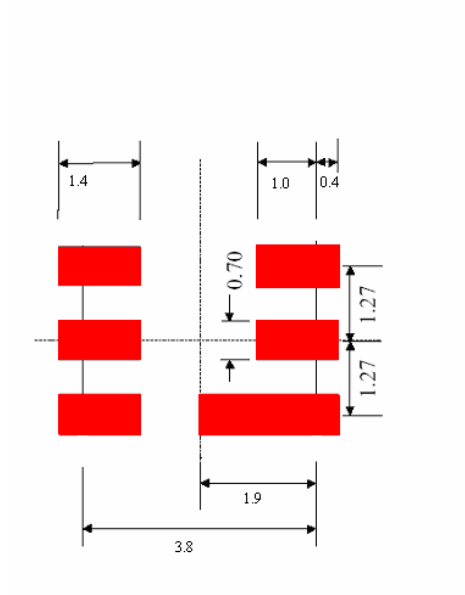
F. FREQUENCY CHARACTERISTICS:



G. TEST CIRCUIT:

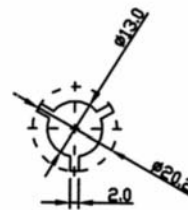
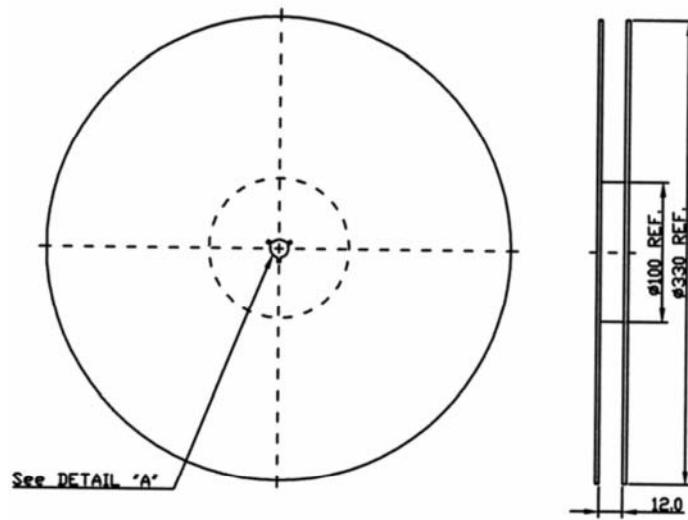


H. PCB FOOTPRINT

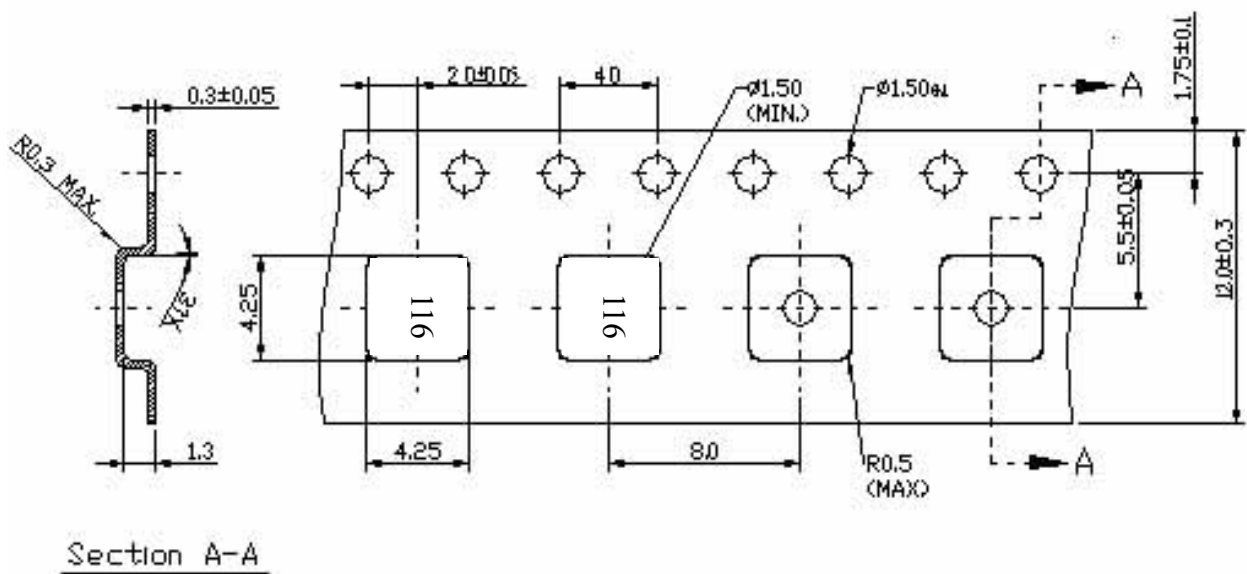


I. PACKING:

1. REEL DIMENSION



2. TAPE DIMENSION



Section A-A

J. REFLOW PROFILE

